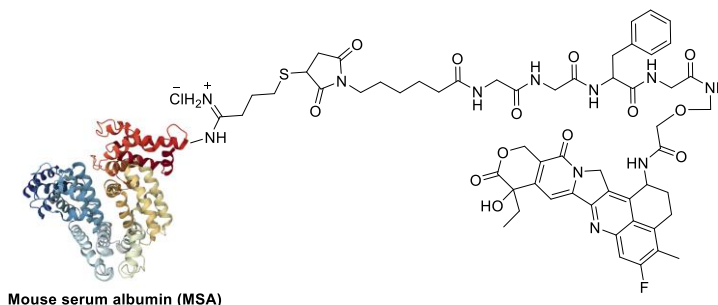


## Certificate of Analysis

### Description of the Material:

- (a) Chemical Name: Mouse Serum Albumin–Deruxtecan Conjugate (MSA–Deruxtecan)
- (b) Chemical Structure:



- (c) Molecular Weight: 70,882 Da
- (d) Appearance: White to off-white preservative-free lyophilized powder.
- (e) Amount: Each tube contains 1 mg of MSA–Deruxtecan
- (f) Reconstitution: Dissolve in 356  $\mu$ L of deionized water to obtain 2.81 mg/mL solution in 1xPBS buffer, pH 7.4

### SKU Code and Batch Number:

- (a) SKU Code: CM52150-1MG or CM52150-5MG
- (b) Lot Number: S638.S15.0117F

### Purity, UV/Vis, and Loading:

- (a) HPLC analysis:  $\geq$ 99% of conjugates, free of any unreacted Deruxtecan
- (b) Drug over MSA ratio: 3.2 (by UV ratio of 380/280 nm), 4.2 (by C4 ratio of 380/280 nm) and 4.39 by MALDI-TOF MS data.
- (c) Characteristic additive UV/Vis spectra of Deruxtecan and MSA

**Intended Use:** For research and development use only.

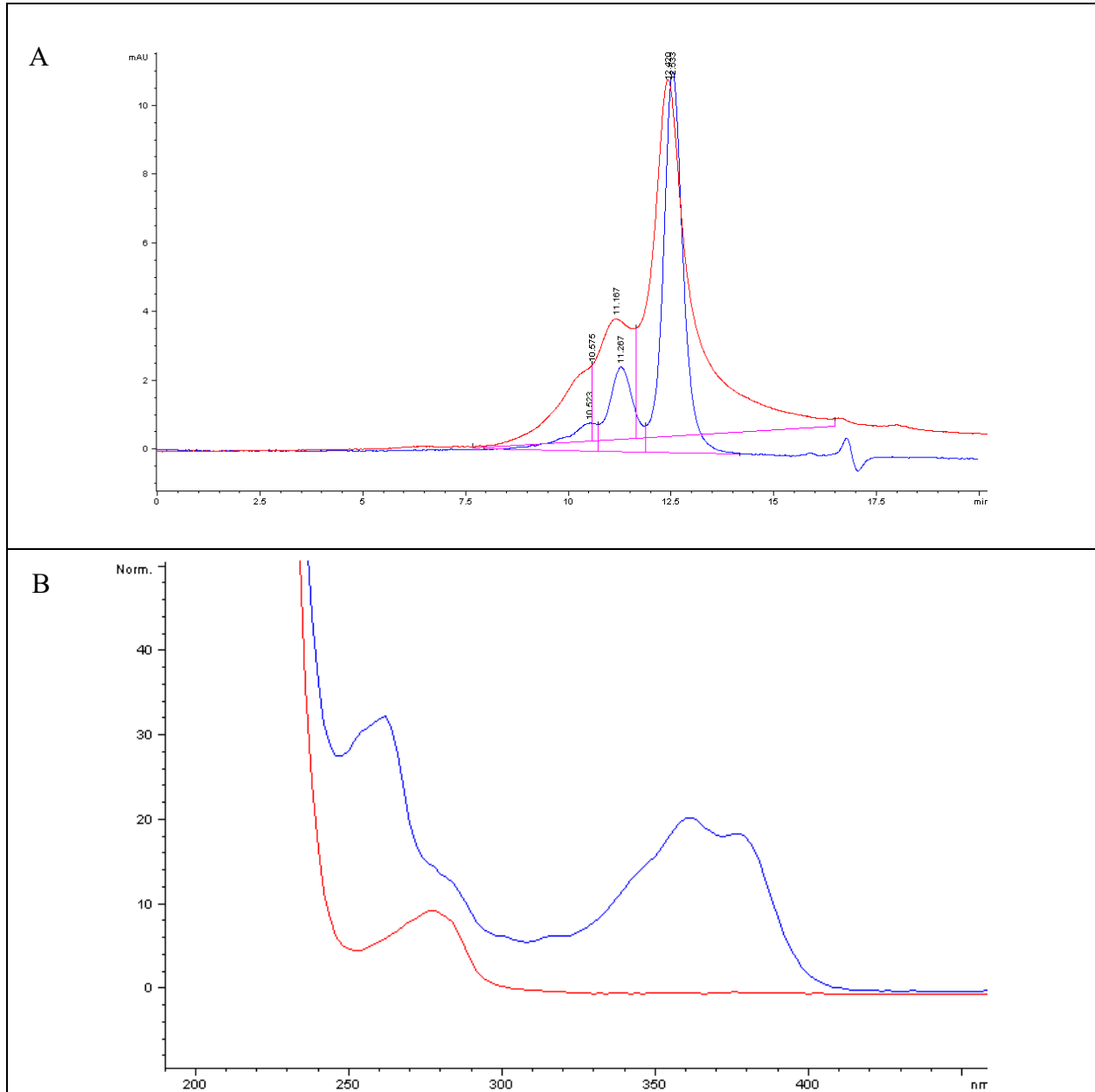
**Hazard Information:** See SDS.

**Shelf life, Storage/Stability:** The conjugate is fairly stable as solid at ambient temperature. Recommended long-term storage is at  $-20^{\circ}\text{C}$  or preferably in a  $-80^{\circ}\text{C}$  freezer. After reconstitution, the solution may be able to stay at  $2-8^{\circ}\text{C}$  for few weeks or  $-20^{\circ}\text{C}$  for few months.

**Expiration date:** 1 year after receiving if stored at  $-20^{\circ}\text{C}$  or below.

**Data Appendix:** Size exclusion, Reversed phase HPLC, UV/Vis Spectrum and MALDI-TOF MS data.

**Figure 1.** Panel A: Overlay of size exclusion HPLC of MSA (blue trace) and MSA–Deruxtecan in PBS buffer (red trace). Panel B: Overlay UV/Vis spectrum of MSA (red trace) and MSA–Deruxtecan (blue trace) showing Deruxtecan absorbance at 380 nm.



**Figure 2.** Reversed phase HPLC of purified MSA–Deruxtecan Conjugate at 280 (panel A), characteristic of Deruxtecan at 380 nm(panel B) and 280 MSA before labeling (panel C)

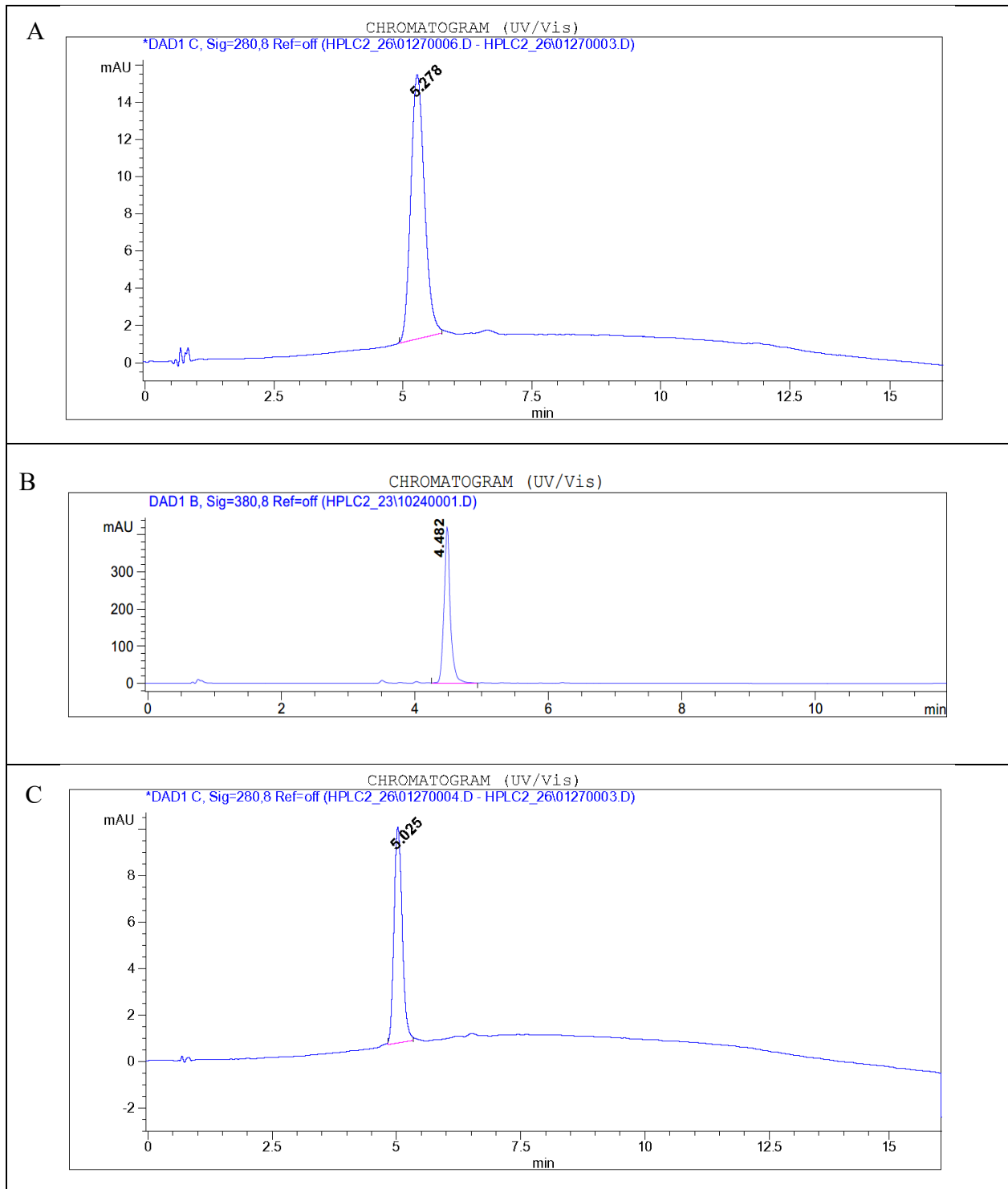


Figure 3. MALDI TOF MS Analysis of MSA-Deruxtecan conjugate and MSA.

