



CellMosaic, Inc.  
10A Roessler Road  
Woburn, MA 01801, USA  
Phone: 781-463-0002; Fax: 781-998-4694; E-mail: info@cellmosaic.com

---

## Certificate of Analysis

### Description of the Material:

- (a) Chemical Name: R-Phycoerythrin-Streptavidin (1:1)
- (b) Molecular Weight: 292 KDa
- (c) Appearance: Red-pink colored liquid.
- (d) Amount: Each tube contains either 100 µg or 500 µg of the product, as specified on the label.
- (e) Concentration: 1.62 mg/mL in 1 x PBS Buffer (no preservative).
- (f) Usage: Centrifuge the tube to ensure no liquid remains on the cap before opening. Store in the dark whenever possible. DO NOT FREEZE.

### SKU Code and Lot Number:

- (a) SKU Code: CM54201-500UG, CM54201-100UG
- (b) Lot Number: S578.S12-P1.0115E

### Purity, MS, and Labeling Data:

- (a) Purity: >99% of conjugate.
- (b) Other Information: Average streptavidin loading per R-Phycoerythrin (PE): ~1.0
- (c) Number of biotin binding sites per conjugate: 3.0 (determined by biotin assay).

**Intended use:** For research and development use only.

**Solubility:** Soluble in water.

**Hazard Information:** Non-hazard materials. See SDS.

**Shelf life, Storage/Stability as Supplied:** Store the compound at 2-8°C. DO NOT FREEZE. Use within one year of receiving.

**Expiration Date:** 1 year after receiving.


**Certified by:** Yumei Huang

**Certifying Officer:** Yumei Huang

Date Appendix: HPLC and MS Data

Injection date: Wed, 22. Jan. 2025  
C:\HPCHEM\1\DATA\HPLC4\_25\01220023.D  
Instrument: Instrument 1

Injection Time: 5:30:29 PM  
Report Style: CM\_Extar

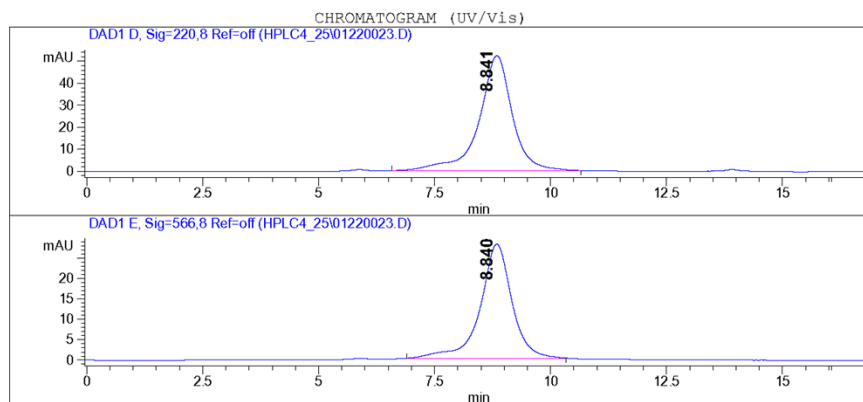
 CellMosaic, Inc. www.cellmosaic.com  
10 A Roessler Road, Woburn, MA 01801, USA.

HPLC ANALYSIS DATA

Data Acquired By: QC  
Sample Location: Vial 13  
Sample Name: S578.S12-P1

Actual injection Volume: 5.0 uL  
Sequence Name:  
Method: C:\HPCHEM\1\METHODS\C14-3004.M  
Pressure: 16.0 bar  
Flow: 0.250 uL/min  
Temp (C): 25.0 C

-- SAMPLE INFORMATION --  
S578.S12-P1  
1:1 x10



Signal Description Wavelength(nm), Bw	Retention Time [Min.]	Area [mAU.s]	Area %
DAD1 D, Sig=220,8 Ref=off	8.841	2614.8	100.0
DAD1 E, Sig=566,8 Ref=off	8.840	1348.5	100.0

\*\*\*\*\*END OF REPORT\*\*\*\*\*