



CellMosaic, Inc.
10A Roessler Road
Woburn, MA 01801, USA
Phone: 781-463-0002; Fax: 781-998-4694; E-mail: info@cellmosaic.com

Certificate of Analysis

Description of the Material:

- (a) Chemical Name: R-Phycoerythrin-Streptavidin HL
- (b) Molecular Weight: 462 KDa
- (c) Appearance: Red-pink colored liquid.
- (d) Amount: Each tube contains either 100 µg or 500 µg of the product, as specified on the label.
- (e) Concentration: 2.02 mg/mL in 1 x PBS buffer (no preservative).
- (f) Usage: Centrifuge the tube to ensure no liquid remains on the cap before opening. Store in the dark whenever possible. DO NOT FREEZE.

SKU Code and Lot Number:

- (a) SKU Code: CM54203-500UG
- (b) Lot Number: S578.S12-P3.0115E

Purity, MS, and Labeling Data:

- (a) Purity: >99% of conjugates.
- (b) Other Information: Average streptavidin loading per R-Phycoerythrin (PE): ~4.3
- (c) Number of biotin binding sites per conjugate: 17.1 (determined by biotin assay)

Intended use: For research and development use only.

Solubility: Soluble in water

Hazard Information: Non-hazard materials. See SDS.

Shelf life, Storage/Stability as Supplied: Store the compound at 2-8°C. DO NOT FREEZE. Use within one year of receiving.

Expiration Date: 1 year after receiving


Certified by: Yumei Huang

Certifying Officer: Yumei Huang

Date Appendix: HPLC and MS Data

Injection date: Thu, 16. Jan. 2025
C:\HPCHEM\1\DATA\HPLC4_25\01160003.D
Instrument: Instrument 1

Injection Time: 10:11:37 AM
Report Style: CM_Extar

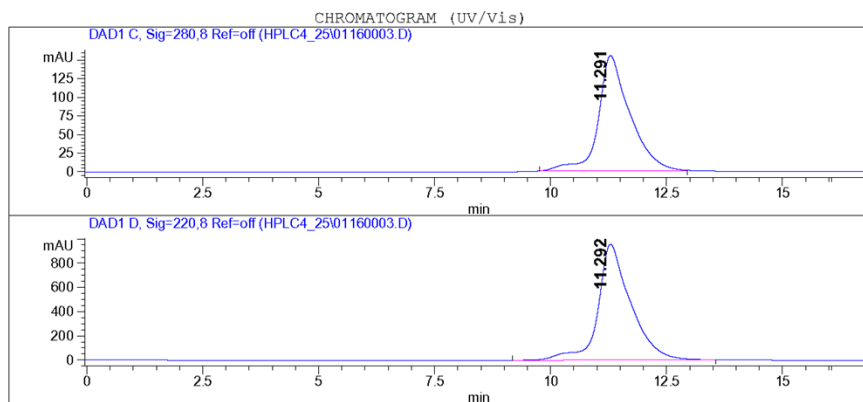
 CellMosaic, Inc. www.cellmosaic.com
10 A Roessler Road, Woburn, MA 01801, USA.

HPLC ANALYSIS DATA

Data Acquired By: QC
Sample Location: Vial 11
Sample Name: S578.S1

Actual injection Volume: 4.0 uL
Sequence Name:
Method: C:\HPCHEM\1\METHODS\C2-3001.M
Pressure: 15.9 bar
Flow: 0.250 uL/min
Temp (C): 25.0 C

-- SAMPLE INFORMATION --
S578.S1
Streptavidin x10




| Signal Description Wavelength(nm), Bw | Retention Time [Min.] | Area [mAU.s] | Area % |
|--|--------------------------|-----------------|-----------|
| DAD1 C, Sig=280,8 Ref=off | 11.291 | 7387.2 | 100.0 |
| DAD1 D, Sig=220,8 Ref=off | 11.292 | 47218.1 | 100.0 |

*****END OF REPORT*****

Injection date: Wed, 22. Jan. 2025
C:\HPCHEM\1\DATA\HPLC4_25\01220025.D
Instrument: Instrument 1

Injection Time: 6:06:49 PM
Report Style: CM_Extar

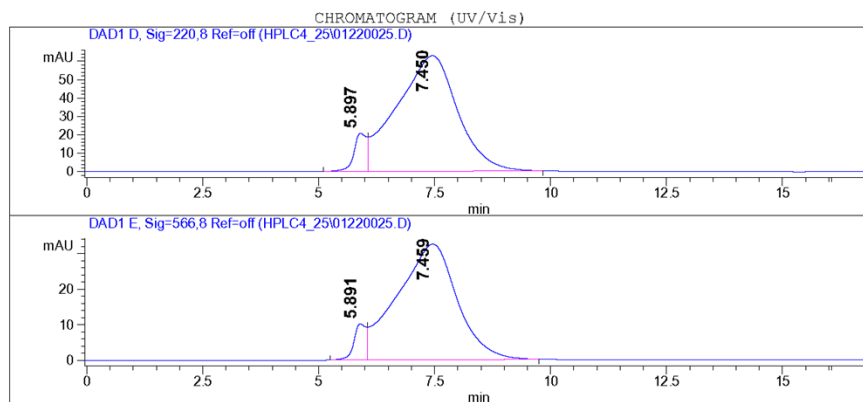
 CellMosaic, Inc. www.cellmosaic.com
10 A Roessler Road, Woburn, MA 01801, USA.

HPLC ANALYSIS DATA

Data Acquired By: QC
Sample Location: Vial 15
Sample Name: S578.S12-P3

Actual injection Volume: 5.0 uL
Sequence Name:
Method: C:\HPCHEM\1\METHODS\C14-3004.M
Pressure: 16.0 bar
Flow: 0.250 uL/min
Temp (C): 25.0 C

-- SAMPLE INFORMATION --
S578.S12-P3
HL x10



| Signal Description Wavelength(nm), Bw | Retention Time [Min.] | Area [mAU.s] | Area % |
|--|--------------------------|-----------------|-----------|
| DAD1 D, Sig=220,8 Ref=off | 5.897 | 403.0 | 6.6 |
| | 7.450 | 5725.5 | 93.4 |
| DAD1 E, Sig=566,8 Ref=off | 5.891 | 189.8 | 6.1 |
| | 7.459 | 2917.7 | 93.9 |

*****END OF REPORT*****