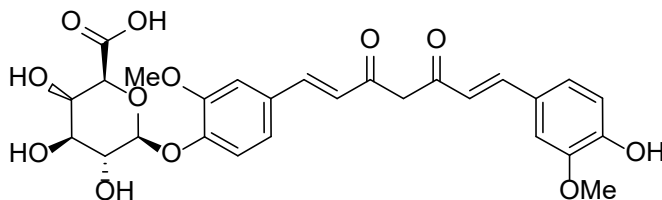


## Certificate of Analysis

### Description of the Material:

- (a) Chemical Name: Curcumin- $\beta$ -D-Glucuronide
- (b) Formula Weight: C<sub>27</sub>H<sub>28</sub>O<sub>12</sub>, 544.50 g/mole
- (c) Chemical Structure:



Chemical Formula: C<sub>27</sub>H<sub>28</sub>O<sub>12</sub>  
Exact Mass: 544.16  
Molecular Weight: 544.51

- (d) CAS Registry Number: 227466-72-0
- (e) Appearance: Orange Solid
- (f) Amount: 100 ug (pre-weighed)
- (g) Solubility: soluble in MeOH

### Material Code and Batch Number:

- (a) Product Number: CM16001
- (b) Lot Number: 0290881

### Purity Specifications and Results:

- (a) HPLC analysis:  $\geq 94\%$
- (b) MS data: 542.7 [M-1]<sup>-1</sup>

**Intended use:** For research and development use only.

**Hazard information:** Hazard information of this compound is unknown and should be handled with proper care.

**Shelf life, Storage condition and Expiration date:** The compound is relatively stable at RT. Recommended to store the product below -20°C under sealed and moisture free conditions.

Date of analysis: September 8, 2023

Expiration Date: 1 year after receiving and stored at -20 °C freezer.



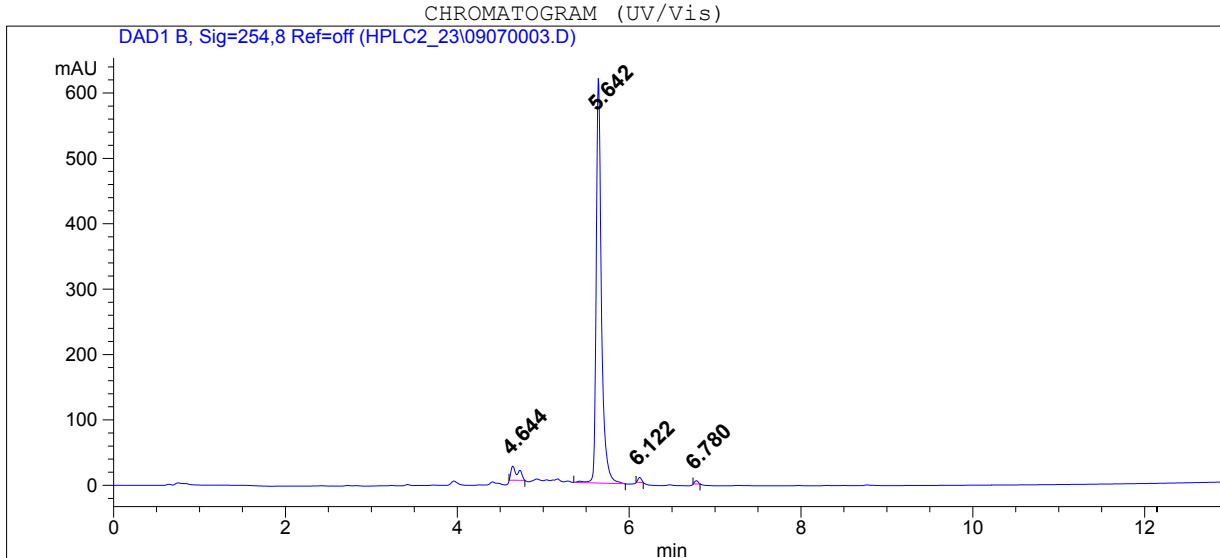
CellMosaic, Inc. www.cellmosaic.com  
10 A Roessler Road, Woburn, MA 01801, USA.

HPLC ANALYSIS DATA

Data Acquired By: CellMosaic QC  
Sample Location: Vial 21  
Sample Name: CM16001, 0290881

Actual injection Volume: 5.0 uL  
Sequence Name:  
Method: C:\HPCHEM\1\METHODS\C1-1101.M  
Pressure: 75.4 bar  
Flow: 1.000 uL/min  
Temp (C): 25.0 C

-- SAMPLE INFORMATION --  
CM16001 Curcumin-Beta-D-Glucuronide  
Lot# 0290881 1mg/mL in MeOH



Signal Description Wavelength(nm), Bw	Retention Time [Min.]	Area [mAU.s]	Area %
DAD1 B, Sig=254,8 Ref=off	4.644	125.6	4.5
	5.642	2627.0	94.2
	6.122	21.0	0.8
	6.780	14.2	0.5

\*\*\*\*\*END OF REPORT\*\*\*\*\*