

## Certificate of Analysis

### Description of the Material:

- (a) Chemical Name: thiol activated HRP (HRP-PEG4-SPDP)
- (b) Molecular Weight: 44 KDa
- (c) CAS Registry Number: N/A
- (d) Appearance: lyophilized powder and ready for use after reconstitution with water.
- (e) Amount: 2 mg

### Material Code and Batch Number:

- (a) Part Number: CM53101-1x2MG or CM53101-3x2MG
- (b) Lot Number: 1603-200.S71208

### Purity, Activity, and Loading:

- (a) HPLC analysis: ≥99%
- (b) HRP Activity: >200 units/mg protein [**Unit Definition.** One **unit** is amount of enzyme that will form 1.0 mg purpurogallin from pyrogallol in 20 sec. at pH 6.0 at 20 °C]
- (c) Thiol Groups: ~2.5 pyridyl disulfide groups per HRP

**Intended Use:** For research and development use only.

**Hazard Information:** No known OSHA hazards. See SDS for details.

**Shelf Life, Storage / Stability:** The product is fairly stable as solid at ambient temperature. Recommended long-term storage is at -20°C or preferably in a -80°C freezer. After reconstitution, the stock solution could be used up to 1 week if stored at 2-8 °C, and for about 2-4 weeks if stored frozen at -20 °C or below; without significantly losing HRP activity.

**Expiration Date:** 1 year after receiving if stored at -20°C or below.

**Data Appendix:** Size exclusion HPLC analysis.

Injection date: Wed, 6. Jan. 2021  
C:\HPCHEM\1\DATA\HPLC4\_21\01060004.D  
Instrument: Instrument 1

Injection Time: 10:37:39 AM

Report Style: CM\_Ext



CellMosaic, Inc. www.cellmosaic.com  
10 A Roessler Road, Woburn, MA 01801, USA.

# HPLC ANALYSIS DATA

Data Acquired By: QC  
Sample Location: Vial 71  
Sample Name: 1603-200.S7.1208

Actual injection Volume: 10.0 uL  
Sequence Name:  
Method: C:\HPCHEM\1\METHODS\TSK-L5.M  
Pressure: 53.4 bar  
Flow: 0.750 mL/min  
Temp (C): 25.0 C

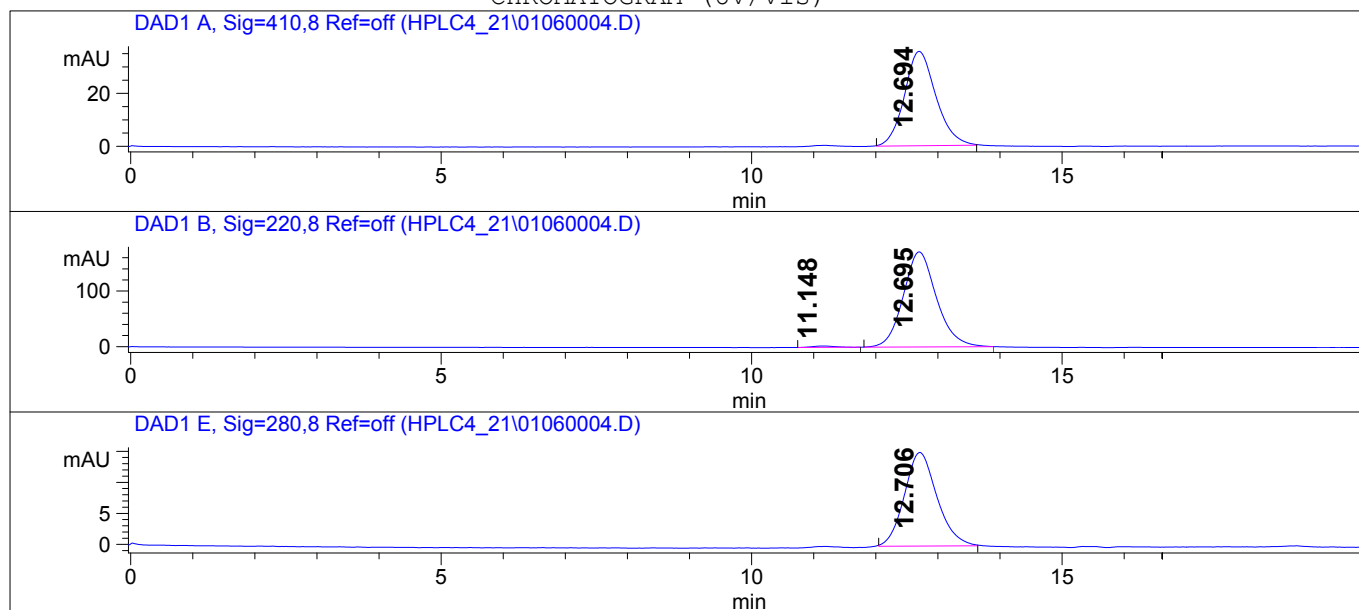
## -- SAMPLE INFORMATION --

1603-200.S7.1208

1 mg/ml

->

## CHROMATOGRAM (UV/Vis)



Signal Description Wavelength (nm), Bw	Retention Time [Min.]	Area [mAU.s]	Area %
DAD1 A, Sig=410,8 Ref=off	12.694	1261.8	100.0
DAD1 B, Sig=220,8 Ref=off	11.148	64.0	1.0
	12.695	6396.1	99.0
DAD1 E, Sig=280,8 Ref=off	12.706	552.2	100.0

\*\*\*\*\*END OF REPORT\*\*\*\*\*