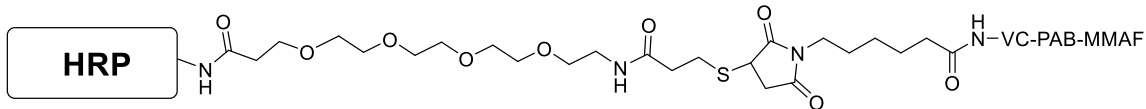


## Certificate of Analysis

### Description of the Material:

- (a) Chemical Name: HRP-VC-PAB-MMAF (1:1) Conjugate
- (b) Chemical Structure:



- (c) Molecular Weight: 44.9 KDa
- (d) Appearance: Brownish lyophilized powder in a 1.5 mL centrifuge tube
- (e) Amount: each tube contains 0.5 mg of HRP-VC-PAB-MMAF.
- (f) Reconstitution: dissolve in 369  $\mu$ L of deionized water to achieve 1.365 mg/mL in 1xPBS buffer containing sugar-based stabilizer (no preservative)

### SKU Code and Batch Number:

- (a) SKU Code: CM53217-0.5MG or CM53217-2MG
- (b) Lot Number: S513.S13.0122D

### Purity, Activity, MS, and Loading:

- (a) HPLC analysis:  $\geq 99\%$  of one VC-PAB-MMAF labeled HRP (some aggregated forms), free of any unreacted HRP and MMAF (Chromatography purified).
- (b) MALDI-TOF MS Data for Intact Conjugate: 44,971 Da
- (c) HRP Activity:  $\geq 206$  units/mg protein [Unit Definition. One unit is amount of enzyme that will form 1.0 mg purpurogallin from pyrogallol in 20 sec. at pH 6.0 at 20 °C]

**Intended Use:** For research and development use only.

**Hazard Information:** See SDS.

**Shelf life, Storage/Stability:** The conjugate is fairly stable as solid at ambient temperature. Recommended long-term storage is at  $-20^{\circ}\text{C}$  or preferably in a  $-80^{\circ}\text{C}$  freezer. After reconstitution, the stock solution could be used up to 1 week if stored at  $2-8^{\circ}\text{C}$ , and for about 2-4 weeks if stored frozen at  $-20^{\circ}\text{C}$  or below; without significantly losing HRP activity.

**Expiration date:** 1 year after receiving if stored at  $-20^{\circ}\text{C}$  or below.

**Data Appendix:** Size exclusion HPLC and MALDI-TOF MS Data.



CellMosaic, Inc. www.cellmosaic.com  
10 A Roessler Road, Woburn, MA 01801, USA.

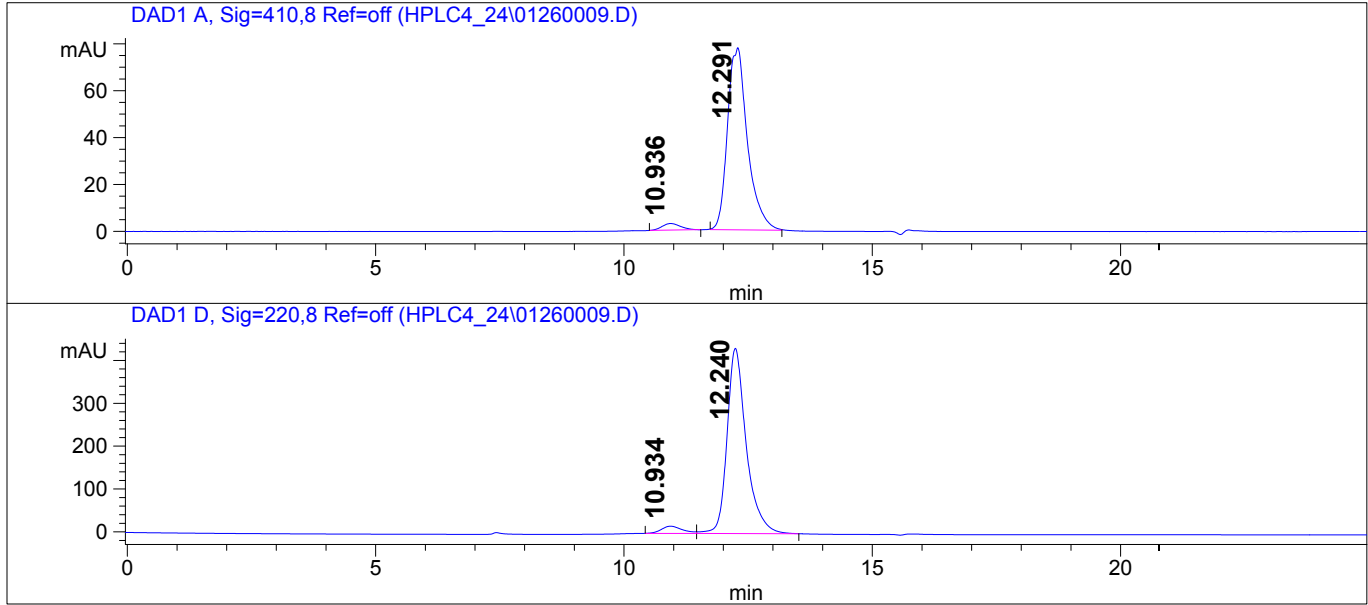
HPLC ANALYSIS DATA

Data Acquired By:QC  
Sample Location:Vial 42  
Sample Name:HRP-Vc-PAB-MMAF

Actual injection Volume:10.0 uL  
Sequence Name:  
Method:C:\HPCHEM\1\METHODS\C2-3001.M  
Pressure: 40.1 bar  
Flow: 0.750 uL/min  
Temp (C): 25.0 C

-- SAMPLE INFORMATION --  
CM53217  
S513.S13.0122D  
Recon. in 45uL DI water

CHROMATOGRAM (UV/Vis)



Signal Description Wavelength(nm), Bw	Retention Time [Min.]	Area [mAU.s]	Area %
DAD1 A, Sig=410,8 Ref=off	10.936	73.4	3.3
	12.291	2176.0	96.7
DAD1 D, Sig=220,8 Ref=off	10.934	512.0	4.2
	12.240	11671.9	95.8

\*\*\*\*\*END OF REPORT\*\*\*\*\*

MALDI-TOF MS of HRP-VC-PAB-MMAF (Lot#: S513.S13.0122D)

